

RollerShade

by Imex Creative Products



RollerShade is an open weave designed fabric allowing natural light in, whilst still providing you and your furnishings protection from the harmful sun's rays. The open weave design also provides you with an outlook of clarity like no other.

RollerShade is ideally suited to internal Roller, Roman and Panel blinds. RollerShade is presented in a range of contemporary colors to suit any home or office.

Features:

- Reduces up to 90% of the sun's harmful rays
- Made in USA using Textilene
- Open weave design for a definitive view
- Provides shade and privacy
- High quality, UV resistant construction
- Reduces cooling costs
- Controls reflected glare
- Mildew resistant
- Fire retardant additives

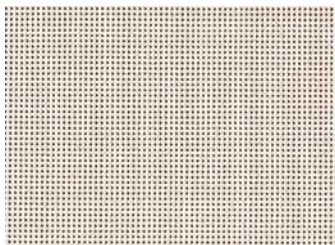


Shade without compromise, insist on ShadeView

RollerShade

by Imex Creative Products

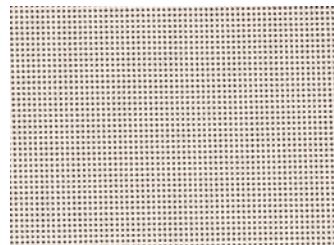
From contemporary to traditional, RollerShade is available in color or design to suit your needs.



Beach



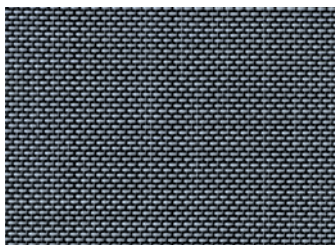
Chalk



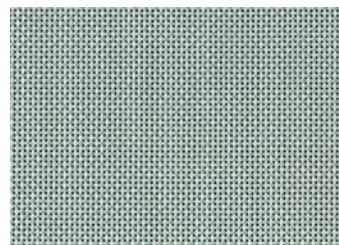
Coral



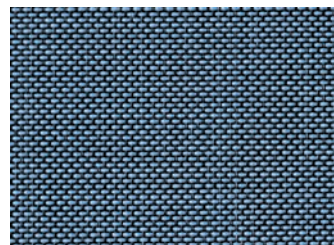
Ebony



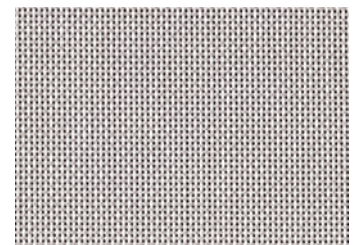
Granite



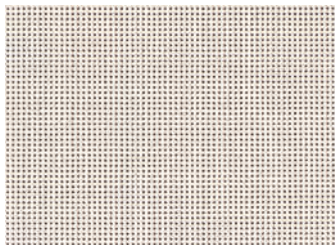
Lichen



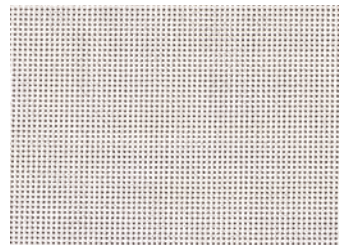
Ocean



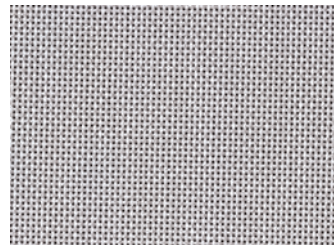
Oyster



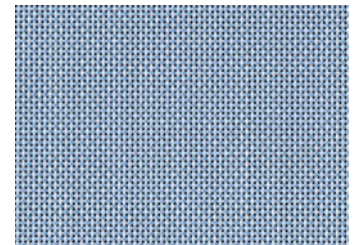
Parchment



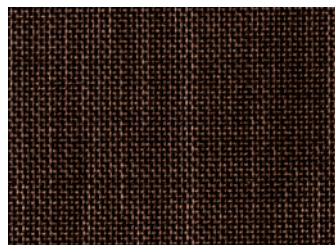
Pebble



Platinum



Wedgewood



Kelp

Care Information

RollerShade is easy to clean and maintain. Simply hose down with clean water and a soft brush and air dry completely.

Printed Colors are for general guidance only. Please make your final selection from a RollerShade Swatch for a perfect match to your project.

IMEX CREATIVE PRODUCTS PTY. LTD

ABN 30 004 240 153

66 Longview Court, Thomastown, Vic. 3074. Australia - Tel: +61 3 9465 8828 - Fax: +61 3 9464 5530

Email: sales@imexcp.com.au - Website: www.imexcp.com.au